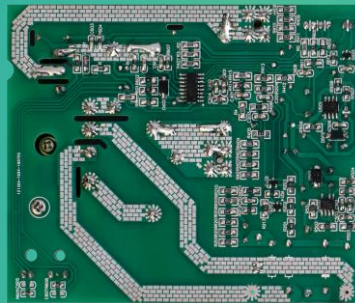


Bachelor or Master Thesis Physical Design



Why join us?

Dialog Semiconductor is a world-leading provider of low-power, advanced mixed-signal ICs creating the next generation of innovative, smart connected devices. In 2019, we generated US \$1.4 billion in revenue and we currently have approximately 2,300 employees worldwide. Working at Dialog we treat each other with respect and fairness, irrespective of gender, race, ethnicity, beliefs, sexual orientation, disability, diversity of thought and experience. We see our differences as strengths and are proud to have an inclusive workforce that values diversity.

Job Description

Physical Design is the link between the logical design and semiconductor physics: translation of circuit diagram into different physical structures on the silicon wafer resulting in a functional Power Management IC (PMIC). The translation and verification of such physical structures requires profound knowledge of analog circuitries as well as know-how in modern, up-to-date semiconductor technology.

Your tasks will include:

- Get into the design flow and quickly move to the topics for your thesis
- Develop a flow, methodology or software
- Document and present your work to the team

Qualifications

In your thesis you should be able to present a novel and feasible solution on a topic related to the physical design, improving at least one issue.

- Studied electronics, microsystems technology, informatics or similar
- Good English language skills
- Good knowledge in Unix and Windows
- Good analytical capabilities
- Programming/Scripting skills are a plus (C/C++, Shellscript, Perl)
- Have readiness to work in a multicultural team

If you would like to explore working for Dialog Semiconductor further, then it's time we heard from you. Please go to the job posting and if interested, apply today. <https://www.dialog-semiconductor.com/vacancies/details?nPostingId=62696&nPostingTargetId=121521&id=PABFK026203F3VBQB8M7V79I2&LG=UK&mask=dialogext>

